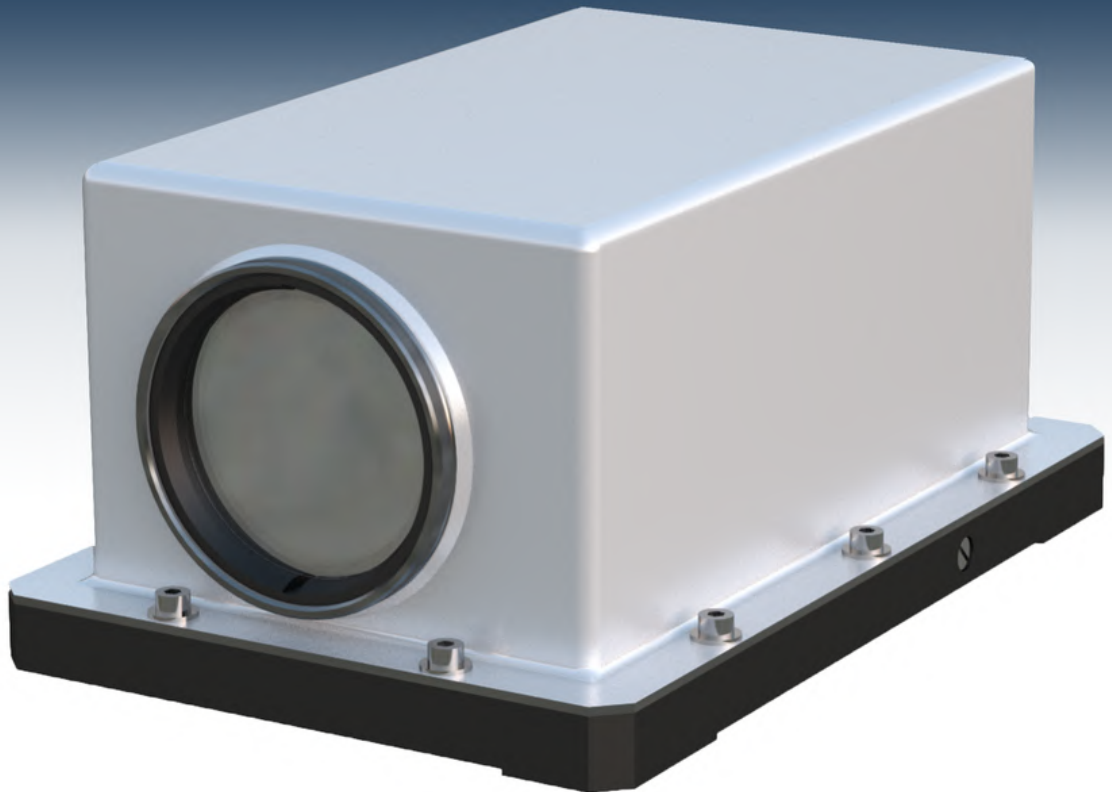
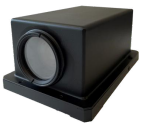


DCAM

Day camera





High-performance day camera designed for harsh environment

APPLICATIONS & BENEFITS

Observation and fire control for land, naval and air applications.

The accuracy of ELYNXO design and manufacturing allows the DCAM to be used also for multi-sensors system harmonization.

KEY FEATURES

- User centric

Accurate design ensuring a perfect alignment between mechanical interface and video sensor.

- Qualitative

Designed and qualified for harsh environments: salt fog, sand and dust, random vibrations, lateral accelerations, high and low temperature, humidity, chocks, et.



Example of DCAM integration on a surveillance system

TECHNICAL CHARACTERISTICS

Optical Performance :

Sensor	CMOS, 2.1 megapixels
Spectral range	Visible and low light level sensibility
Continuous optical zoom	x 30
Numerical zoom	x 12
Horizontal FOV	Full-HD 2.3°- 63.7° / PAL 1.73°- 47.8°
Vertical FOV	Full-HD 1.3°- 35.8° / PAL 1.3°- 35.8°

Mechanical Data :

- Weight: 1.7 kg
- Dimensions: 184mm (L) x 82mm (H) x 115mm (W)

Electrical Characteristics :

- Video outputs: Full-HD 1080p / 60fps (HD SDI) and SD (PAL)
- Control interface: serial link with VISCA protocol
- Connectors: D38999 type
- Power supply: 28V (functional +18 - +35V)

Environmental Characteristics :

- Operating temperature: -32°C / +63°C
- Storage temperature: -32°C / +63°C

Included :

- Transport suitcase
- Instruction Manual

On Request :

- Connection cord including video, power supply and control interface
- Cleaning kit

